

FIELDSCOUT[®]

TCM 500 TURF METER

CATALOG #2975NDVI



Spectrum
Technologies, Inc.

<i>Contents</i>	
General Overview	3
Computer Interface/Changing the Battery	5
Identifying the Correct Com Port	6
Initial Startup	7
Connecting to a GPS Unit	8
Keypad Operation	10
Standard Reading Mode	12
Field Scout Software Toolbar	14
Meter Settings	16
Data Files	17
Meter Indexes	18
Specifications	19
ERROR messages	20
Appendix 1: Time Zone Corrections	21
Frequently Asked Questions	22
Service and Support	23

GENERAL OVERVIEW

Turfgrass quality is visually evaluated by human assessors based on a scale of 1 (poorest, the grass is dead) to 9 (ideal, the grass is of outstanding quality) using a common assessment method. A rating of 6 or greater indicates adequate turf quality. Because this evaluation practice is subjective, individual biases are inevitable and lead to some level of inconsistency, even among the most highly trained observers. This variability led to the need for a more objective evaluation technique.

To answer this need, researchers have developed the Normalized Difference Vegetative Index (NDVI). The Field Scout TCM 500 “NDVI” Turf Color Meter measures reflected light from turf grass in the red (660 nm) and near infrared (850 nm -NIR) spectral bands.

Because chlorophyll absorbs the red band (660 nm) of incoming radiation, the reflectance at that wavelength is relatively low due to the strong absorption of the light by the plant pigments. The high reflectance in the NIR (850 nm) band is caused by the cellular structure of the plant leaves, particularly the spongy mesophyll leaf structure.

Features

- A measuring target approximately 3 inches (7.6 cm) in diameter.
- Consistent internal light source that negates the effects of sunny versus cloudy conditions.
- Red & NIR data is presented in three forms: Percent reflectance (0.0 to 99.9) of Red and NIR, NDVI (0.000 to 1.000), and Grass Index (ie. 1.00 to 9.00).
- GPS/DGPS can be used - requires GPS/DGPS cable (item 2950CV5).
- A running average is calculated and displayed as multiple readings are taken.
- Data is stored in comma-delimited text files. They can be opened and processed with any spreadsheet, graphing, statistical, or word processing program.

COMPUTER INTERFACE/ CHANGING THE BATTERY

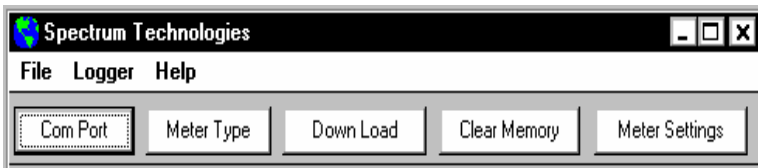
Software Installation

Insert the CD for Field Scout software into your PC's disk drive. If auto-start is not enabled on your computer, select **Run** from the **Start** menu and type **D:\Setup.exe** (Substitute the appropriate drive letter for your CD drive). Click **OK** and follow the instructions on the screen.

The meter's data port can be accessed by removing the plastic screw to the left of the handle. It is through this port that the meter is connected to either a PC or to a GPS unit. The meter must be turned off before attempting communication with the software.

Connecting to a PC

The Field Scout software comes with a gray PC interface cable. This cable connects to the 9-pin serial port of your computer and to the meter's computer port. The meter's configuration can be modified by clicking on the **Meter Settings** button (see Meter Settings, p. 16). The **Com Port**, **Meter Type**, **Download**, **Clear Memory** and **Meter Settings** buttons are explained in the Field Scout Software Toolbar section (p. 14).



Changing the battery

The battery compartment is accessed by removing the 4 philips-head screws on the underside of the meter and removing the bottom plate. The TCM 500 meter is powered by a 9-V battery.

INITIAL STARTUP

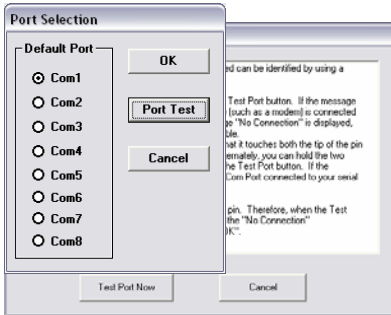
Allow the temperature of the TCM 500 meter to equilibrate with the turf environment prior to sampling.

When the TCM 500 meter is first turned on, the battery strength (**Battery at** __ %) will appear on the LCD. The available battery power percentage assumes alkaline batteries are being used. If rechargeable NiCd batteries are installed, the available battery power will be more than displayed. If the data logging option has not been enabled, the unit will then proceed to the standard reading mode.

In order to record data and global positioning system (GPS) coordinates, the data logger must first be enabled through the software (See p. 16). If the data logger has been enabled, battery strength and the amount of remaining memory (**Memory** __ % **FULL**) will be displayed. If GPS data is being recorded as well, the meter will display the status of the GPS signal. The meter will then proceed to the standard reading mode.

IMPORTANT: The **GPS** unit must be powered up, have located the satellites and been connected to the meter before turning the meter on (see Connecting to GPS Unit p. 8).

IDENTIFYING THE CORRECT COM PORT

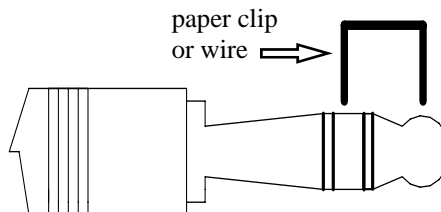


The computer **Communications Port** to which the PC-3.5 serial cable is connected can be identified by using a paper clip.

1. Disconnect the serial cable from the meter.

2. To bring up the **Port Selection** screen, click on the **Com Port** Button, select the com port to be tested and click the **Port Test** button. Click the **Test Port Now** button. If the message “Connection OK” is displayed, another device (such as a modem) is probably connected to that port. If the message “No Connection” is displayed, this port may be the one connected to your serial cable and you can proceed to the next step.

3. Place a paperclip on the end of the serial pin so that it touches both the tip of the pin and the metal area between the two black rings. Again click on the **Test Port Now** button. If the message “Connection OK” now appears, this is the com port connected to your serial cable.



NOTE: The meter does not short-circuit the serial pin. Therefore, when the **Test Port Now** button is clicked while the meter is connected, the “No Connection” message will be displayed.

CONNECTING TO A GPS UNIT

The data logger function must be enabled using the Field Scout software in order to record a GPS signal (see Meter Settings p. 16).

The GPS unit must be plugged into the TCM500 meter and working when the meter is first turned on. If a GPS signal is found at startup, the logger will search for a GPS signal for every reading. If no GPS signal is found when the meter is first turned on, the meter will not search for one when taking readings, thereby saving time when taking readings. In this case the LCD will display the **No GPS Found** message.

If the GPS signal is found while taking geo-referenced readings, the LCD will briefly display the message, “**Reading GPS ..**” before displaying the measurement. If the GPS signal is lost during a series of readings, or if the specified differential correction is not found, the LCD will read “**Reading GPS .. ERR**” before returning to measurement mode. In this case, the data will be recorded without latitude and longitude. During subsequent readings, the meter will again search for a GPS.

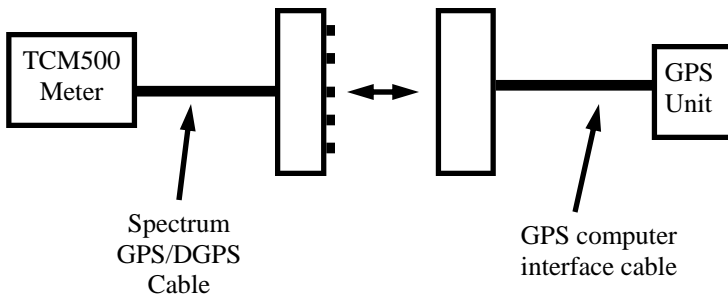
GPS Setting

Your GPS unit must be set for NMEA 0183 input/output messages. If the meter has trouble receiving the GPS signal, check that the GPS unit has the following settings:

Data bits: 8	Stop bits: 1
Baud rate: 4800 bps	Parity: None
Timing: 1 second	GGA data string

Cable Connections

A GPS/DGPS cable (item # 2950CV5) is required to connect the TCM500 meter to a GPS unit. This cable has a 9-pin male connection and a stereo pin that connects to the meter's data port. You will also need a cable that allows the GPS unit to connect to a 9-pin male serial port. If this cable doesn't come standard with your GPS unit, it should be available from the manufacturer. This cable is generally used to upload information from a computer to the GPS unit. These components should be connected as shown in the figure below.



Connecting the TCM500 meter to a GPS unit

KEYPAD OPERATION

ON

The **ON** button turns the meter on and off. When the meter is turned on, it will display the battery status for 3 seconds. The screen will then display the amount of memory available and the status of the GPS connection. The meter then goes into standard reading mode. See below for a sample sequence of meter power-up screens.

CAUTION: If the meter is inactive for 10 minutes, it will automatically turn off to conserve power. When the meter is powered off, either with the ON/OFF button or due to inactivity, the AVG and N values are reset to zero (see Standard Reading Mode, p. 12)

BATTERY AT 85%
V7.0

Battery status screen

LOGGER 28% FULL
NO GPS FOUND

*Logger and GPS status
screens*

LOGGER 35% FULL
GPS=YES DGPS=YES

Delete
Clear Avg

When the DELETE/CLR AVG button is pressed and immediately released, the last data point will be and the running average. Pressing and holding this button will reset the running average (**AVG**) and **N**-value to zero.

Read

Measurements are taken by pressing the **READ** button. The turf color data, in the currently selected mode (see below), will be displayed on the top line of the LCD.

The reading is also incorporated into the running average (**AVG**) and the sample number (**N**) is incremented. The current **AVG** and **N** are both displayed on the bottom line of the LCD. Up to 64 **RED/NIR** readings (**N064**) can be included in the running **AVG**. If more than 64 readings are taken before the data series is cleared or the meter is turned off, the meter will display “**AVG=- - -**”. See Standard Reading Mode (p. 12) for more details.

MODE

The **MODE** key selects which of three data formats will be displayed on the LCD. The mode can be changed after a measurement to view measurement values in different formats. The TCM500

has three display modes; **RED/NIR**, **NDVI**, and **Grass Index**. See Meter Indexes (p. 18)

NDVI

<p>NDVI = .462 N022 Av = .501</p>

The equation for NDVI computation is shown on p. 18.

Grass Index

<p>Grass Index=3.60 N010 Av=4.10</p>
--

The meter uses the reflectance values to compute a grass index (see p. 18)

RED/NIR

<p>RED/NIR = 17.1/ 60.5% N002 Av = 15.1/ 62.3%</p>
--

Displays the % reflectance in the **RED** (660 nm) and **NIR** (850 nm) wavelength bands.

STANDARD READING MODE

Taking Readings

When in standard reading mode, the LCD of the TCM500 will display the turf color data and a running average. This value remains in the meter's short-term memory until it is deleted or the meter is shut off (see Keypad Operation, p. 10). If the data logger is enabled, the data is also recorded in the logger's memory.

Do not take measurements when dew is present or when turf is wet following irrigation. Since moisture on turf affects the amount of reflected light from the samples, meter readings will not be accurate.

Readings will **NOT** be affected by ambient light (sun versus clouds) conditions. The TCM 500 has its own internal light source, allowing measurements to be made any time.

When measuring "taller" grass, it may be necessary to press down on the meter/sample such that ambient light is blocked out. Excessively bright ambient or reflected light will saturate the light sensors and thereby cause invalid readings. When the light sensors near the saturation point, an LCD message of **!!ERROR!!**, **EXCESSIVE LIGHT** will appear.

Meter Display

The first line of the LCD will be the index reading in the currently selected mode (RED/NIR, NDVI, Grass) (see **MODE** key, p. 11). The second line gives information about the running average (**AVG**) and current sample number (**N**).

As each reading is taken, i.e. each time the trigger is released, the **INDEX** reading is incorporated into the

running average (**AVG**) and the sample number (**N**) is incremented. The current **AVG** and **N** are both displayed on the bottom line of the LCD.

Although **N** can increment up to 250, only a maximum of 64 **INDEX** readings (**N064**) can be used to generate the running **AVG**. If more than 64 readings are taken before the short-term memory is cleared, the screen will display **AVG=- - -**. However, deleting an **INDEX** reading from short-term memory (thus causing a new **AVG** to be calculated) does not free up memory space for storing an additional reading. In other words, the average is not calculated if the trigger has been pressed more than 64 times without clearing the average (see Keypad Operation, p. 10).

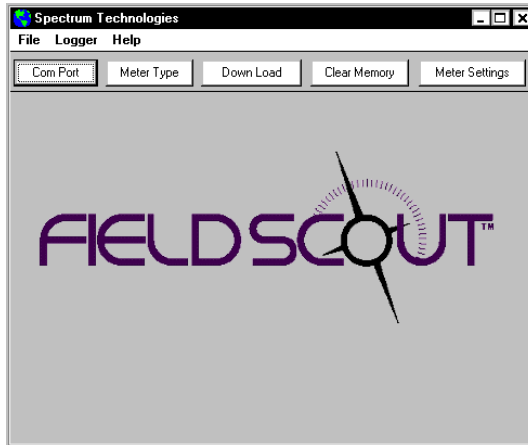
Valid index readings can be taken beyond the maximum **N** value of 250. But **N** will not continue to increment unless the entire current data series is cleared, resetting **N** to zero.

Logging Data

The data logger must be enabled in order to download data to a PC. In the Field Scout software, clicking a button entitled **Meter Settings** will display a screen that has **Enable Meter's Logging Function** as an option. The box associated with this option must be checked in order to log and download data. Files downloaded from the TCM 500 meter are comma-delimited text files and can be opened in any word processing, spreadsheet, graphing, or statistical analysis program.

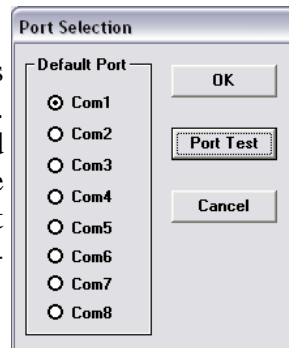
There are six columns in the downloaded text file. If GPS is used, **longitude** and **latitude** are in the first two columns. Otherwise, these 2 columns are empty. The sample number **N**, the **%RED**, **%NIR**, and **NDVI** are in the remaining columns (see Data Files, p. 17).

FIELD SCOUT SOFTWARE TOOLBAR



Com Port

The gray software cable connects the meter to the computer data port. Select the Com Port that is assigned to the computer data port. See Identifying the Correct Com Port (p. 6) for instructions on how to determine which port to select.



Meter Type

Select the TCM 500 (NDVI Type) option from the list of available Field Scout meters.

Download

To download data from the internal data logger, turn the meter off and connect the gray serial cable to the RS-232 port beneath the ON button on the meter face plate. Click the **Download** button on the main software screen. In the **Save Data As** screen (see below), give the file a descriptive name and select the location where it will be saved.

When the file has been saved, the software will give you the option of immediately viewing the file. The data file is stored as a comma-delimited text file and may be viewed in text editor or spreadsheet software.



Clear Memory

The logger continuously adds to its memory until the logger is manually cleared by the Field Scout software. Data is not automatically removed from the logger memory after a download. The **Clear Memory** button initiates the clear memory sequence. The software then warns you that you are about to clear the memory. Once you have cleared the logger memory, there is no way to retrieve the logged data from the meter.

Meter Settings

Click this button to configure the meter and data logger. Refer to “Meter Settings” (p. 16) for more details.

METER SETTINGS

The screenshot shows a 'Meter Settings' dialog box with two main sections: 'Meter Info.' and 'Logger Settings'. The 'Meter Info.' section contains fields for 'Serial #' (55), 'Model #' (TCM 500), 'Firmware Version' (7.0), and 'Meter Name' (Test). The 'Meter Name' field has a note '(Max Length = 32 Characters)'. The 'Logger Settings' section contains three options: a checked checkbox for 'Enable Meter's Logging Function (Must Be Checked to Log Data)', an unchecked checkbox for 'Set Meter to Record Only GPS Readings with Differential Correction', and a text box containing '5' with the label 'Enter Time Zone Correction Number (i.e. 5 for USA Central Time Zone)'. At the bottom are 'Save' and 'Cancel' buttons.

Meter Info.		
Serial #:	55	Model #: TCM 500
		Firmware Version: 7.0
Meter Name:	Test	
	(Max Length = 32 Characters)	

Logger Settings	
<input checked="" type="checkbox"/>	Enable Meter's Logging Function (Must Be Checked to Log Data)
<input type="checkbox"/>	Set Meter to Record Only GPS Readings with Differential Correction
<input type="text" value="5"/>	Enter Time Zone Correction Number (i.e. 5 for USA Central Time Zone)

Save Cancel

The Meter Settings screen in the Field Scout software is used to configure the meter and data logger for your specific application. It is accessed by clicking the **Meter Settings** button or selecting **Edit Logger's Name and Settings** from the **Logger** menu. The fields are described below.

Meter Name: The name given the meter will be the title on the first line of the downloaded text file.

Logger Settings: The data logger is enabled and disabled by checking the first box. If the data logger is enabled, it will search for a GPS signal when the meter is turned on. If a signal is found, position data will be stored along with the soil moisture data. If no GPS signal is available when the logger is turned on, the logger will no longer look for one when measuring and recording soil moisture data. If the second box is checked, the logger will store the GPS value **only** if it has been differentially corrected. If the differential correction is not found, only the turf color data will be stored in the data file. A time-zone correction should be entered in the third box. Appendix 1 lists time zone corrections for several cities.

DATA FILES

	A	B	C	D	E	F	G
1	Name: Test						
2	Serial #: 55						
3	Datum: WGS 84						
4	Longitude	Latitude	No.	Red %	NIR %	NDVI	
5							
6	-88.3567	41.31134	N=1	70.5	75.5	0.034	
7	-88.3567	41.31134	N=2	70.9	75.7	0.033	
8	-88.3567	41.31134	N=3	70.9	75.7	0.033	
9							
10							
11							
12							
13							
14							
15							
16							
17	-88.3567	41.31218	N=13	10.5	69.1	0.736	
18	-88.3567	41.31218	N=14	10.7	68.9	0.731	
19	-88.3567	41.31218	N=15	10.9	68.6	0.726	
20	-88.3567	41.31218	N=16	13.3	69.6	0.679	
21	-88.3567	41.31218	N=17	12.8	68.4	0.685	
22	-88.3567	41.31218	N=18	12.6	67.7	0.686	
23	-88.3577	41.31218	N=19	11.8	65.7	0.695	
24	-88.3577	41.31218	N=20	12	65.4	0.690	
25	-88.3577	41.31218	N=21	12.2	65.2	0.685	
26							
27							

Sample data showing results of data collected with and without GPS activated. Note: GPS signal not found when recording data in lines 10 through 15.

The data is stored in comma-delimited text files. These files can be opened with text-editing software (e.g. Notepad) or spreadsheet software (e.g. Excel).

The first two lines of the data file give the logger's name and serial number. The third line indicates that latitude and longitude are referenced to the 1984 World Geodetic Survey datum. The fourth line shows the column headings for the rest of the data file.

Logging sessions are started and completed by turning the meter on and off. The start of a logging session is indicated by the data line "Logger Started." If a GPS signal was found at the start of a logger session, a time stamp is included on the "Logger Started" line.

The data file is separated into 6 fields: Latitude and Longitude (blank if a GPS unit was not connected), sample number, Red reflectance, Near Infrared reflectance, and NDVI. The Grass Index is not saved in the data file.

METER INDEXES

The LCD of the TCM500 NDVI meter displays measurements in one of three modes (see **MODE** key p. 11). The modes are described below:

1.) Normalized Difference Vegetative Index (NDVI)

NDVI is defined as:

$$\text{NDVI} = \frac{\text{NIR} - \text{Red}}{\text{NIR} + \text{Red}}$$

Where:

NDVI = Normalized Difference Vegetation Index

NIR = Reflectance in the band of 850 ± 5 nm

Red = Reflectance in the band of 660 ± 5 nm

2.) Grass Index

The Grass Index has a scale of 1 to 9 and approximates the rating a visual observer would assign to the turf grass. This provides a more objective value for this, generally, very subjective parameter. The Grass Index is calculated as follows:

$$\text{Grass Index} = (\text{NDVI} \times 6.6) + 2.26$$

3.) Reflectance Values

The percent of incident light of each wavelength band that is reflected back to the optical sensor in the meter. These same reflectance values are used to calculate NDVI and the Grass Index.

SPECIFICATIONS

Measurement Sample:

Turf grass canopy

Measurement System:

Reflectance of red (660 nm) and NIR (850 nm) light

Light Requirements:

The TCM 500 meter has its own internal light source.

Measurement Area:

Approximately 3.0 inches (7.6 cm)

Measurement Units:

- a) Percent reflectance (0.0 to 99.9) of Red and NIR
- b) NDVI (0.000 to 1.000)
- c) Grass Index (1.00 to 9.00)

Measurement Interval:

One second per measurement without GPS

Two to four seconds per measurement with GPS

Repeatability:

± 5% of measurement

Download File Format:

Comma-delimited text file

Temperature Range:

32° to 104° F (0° to 40°C)

Environmental Sealing:

Dust-proof

Power Conservation:

Automatically turns off after 10 minutes of inactivity

Battery:

9 V Battery

Approximately 3000 measurements

Data Logger Capacity:

3250 measurements without GPS / DGPS

1350 measurements with GPS / DGPS

ERROR MESSAGES

LIGHT LEAKAGE	This error occurs when ambient light leaks under to meter and on to the sample area.
MEMORY FULL	This error occurs when the optional data logger capacity has been reached. Download the data and clear the memory.
LOW BATTERY	This error message begins to flash when the alkaline battery level reaches 20%. Turn the meter off and replace the batteries.
ABOVE CALIBRATION	The optical sensor is out of calibration. Meter should be sent in for service.
BELOW CALIBRATION	
SENSOR SATURATION	There may be damage to the internal light source. Meter should be sent in for service.

APPENDIX 1

TIME ZONE CORRECTIONS

Time Zone Correction	City
0	Dublin, Lisbon, London
3	Rio de Janeiro, Montevideo
4	Asuncion
5	USA: Eastern Standard Time
6	Central Standard Time
7	Mountain Standard Time
8	Pacific Standard Time
9	Anchorage
10	Honolulu
11	Wellington
13	Adelaide, Melbourne, Sydney
14	Vladivostok, Brisbane
15	Seoul, Tokyo
16	Beijing, Hong Kong, Manila, Singapore, Taipei
17	Hanoi, Jakarta, Vientiane
18	Calcutta, New Delhi
19	Kabul, Islamabad
20	Tehran, Abu Dhabi, Dubai
21	Moscow, Nairobi, Kampala, Riyadh
22	Ankara, Athens, Helsinki, Istanbul, Cairo, Johannesburg, Harare
23	Amsterdam, Barcelona, Berlin, Geneva, Paris, Prague, Rome, Brussels, Madrid, Stockholm, Warsaw, Lagos

FREQUENTLY ASKED QUESTIONS

I have new batteries. Why doesn't my initial startup screen read "Battery at 100%"?

The battery strength indicator is set to accurately detect the strength of alkaline batteries. The displayed battery strength of NiCad batteries will be less than 100%.

Does the TCM 500 transmit any light to the target?

Yes. The TCM 500 meter has an internal light source to illuminate the sample. It senses the light being reflected from the target.

SERVICE AND SUPPORT

The TCM 500 is easy to use and reliable. In the unlikely event that you have a problem with the hardware or software, please read the following.

Who do I contact?

Contact the company that you bought the TCM 500 meter from: Spectrum Technologies, Inc. or a Spectrum Authorized Dealer.

When Contacting Spectrum Technologies, Inc. Please indicate that you need Technical Support for the TCM 500 meter.

1. Write down the events that led to the problem. Have you changed anything in your computer recently? Are you doing anything differently?
2. Provide details on the hardware and software configuration of your computer including: manufacturer, model number, peripherals, and versions of the operating system.
3. Completely describe the problem. The more information you provide, the faster and more accurately we will be able to respond.

WARRANTY

This product is warranted to be free from defects in material or workmanship for 1 year from the date of purchase. During the warranty period Spectrum will, at its option, either repair or replace products that prove to be defective. This warranty is void if the Spectrum products have been damaged by customer error or negligence or if there has been an unauthorized modification.

Returning Products to Spectrum

Before returning a failed unit, you must obtain a Returned Goods Authorization (RGA) number from Spectrum. You must ship the product(s), properly packaged against further damage, back to Spectrum (at your expense) with the RGA number marked clearly on the outside of the package. Spectrum is not responsible for any package that is returned without a valid RGA number or for the loss of the package by any shipping company.

Spectrum
Technologies, Inc.

12360 S. Industrial Dr. East
Plainfield, IL 60585
(800) 248-8873 or (815) 436-4440
FAX: (815) 436-4460
E-Mail: info@specmeters.com
www.specmeters.com